

PORT STATE CONTROL 2018



Contents

3	FOREWORD
4	MEASURES ADOPTED BY CLASSIBS
5	CLASSIBS OPERATING STATISTICS - DETENTIONS 2016-2018
6	IBS PSC CHARTS
22	PHOTOGRAPHS OF THE MOST COMMON DEFICIENCIES FOUND BY PSC DURING 2018
23	MOUS OFFICIAL ANNUAL REPORTS

ANNUAL PORT STATE CONTROL

FOREWORD

The objective of this report is to present the detentions on ships for which Isthmus Bureau of Shipping (ClassIBS) has carried out Class and/or Statutory work for different Ship owners and Administrations during the years 2016-2018. The report covers USCG, Paris MOU, Tokyo MOU, Black Seas MOU, Mediterranean Ocean MOU and Indian Ocean MOU (Memorandums of Understanding).

The report is based on information extracted from the MOU web sites and PSC's, detention reports obtained directly from the PSC authorities, detention reports obtained through the Flag States, detention reports obtained from our surveyors, and information of the ship status in our Data Base available previous to the detention.

Port State Control has been found to be very effective tool in reducing the number of ships with deficiencies as well as improving maritime safety and pollution prevention. There has been a significant increase in PSC activity worldwide in concern with a number of amendments to relevant international conventions.

Recognizing this and the related importance of PSC to the reputation and financial wellbeing of the ship owner and flag administration, ClassIBS has been working hard to reduce the detention rate of its Class ships.

Port State Control inspections procedures have been improved to cover not only a ships' hardware or documents, but also the operational requirements of the relevant conventions or shipboard maintenance under the ISM Code.

ClassIBS PSC performance position is considered within our target of objectives and demonstrates that ClassIBS ships are being operated and maintained to the highest standards. We are also proud of its performance over the past three years and the hard work invested by our Head Office Staff and field surveyors in ensuring that ships continue to operate in a high-quality environment.

ClassIBS Head Office
July 2019

Measures Adopted By ClassIBS

(1) Cooperative assistance with Port States and treatment of deficiencies

When surveyors of the Society are notified of the detention of a ship classed with ClassIBS, the Society actively co-operates with the reporting PCS Authority.

(2) Treatment of inspection reports by PSC officers

When a surveyor receives an inspection report from a port state authority, the report is sent to the ClassIBS Head Office. The report is immediately examined for the root causes of the deficiencies by experienced staff.

(3) Special training at several meetings on PSC related issues

is conducted regularly for surveyors, to ensure that they carry out full and effective surveys with an uncompromising attitude towards ensuring the quality and safety of the ships of ClassIBS.

(4) PSC related issues are regularly discussed at technical committee meetings,

, in order to emphasize on the importance of proactively ensuring the proper procedures in place to prevent the detention of ships.

(5) Visits to Port States

Personnel from the ClassIBS Head Office as well as local survey sites are assigned to visit the headquarters or offices of various Port States with the aim of introducing ClassIBS.



Date: 23 November 2018
Tokyo Mou Secretary Mr. Hideo Kubota
ClassIBS Mr. Alex Orillac

ClassIBS OPERATING STATISTICS - DETENTIONS 2016-2018

In 2018 out of total five hundred eighty one (581) PSC inspections around the world, only five (3) detentions were attributed to the work performed by our surveyors. These detentions took place on ports members of the Tokyo MOU and Paris MOU.

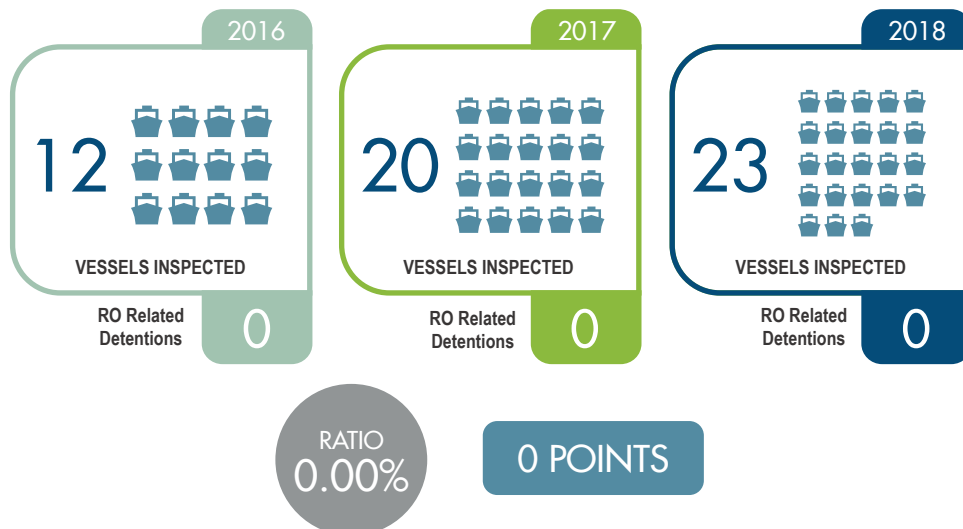
Therefore, on the year 2018, there were no attributable detentions to IBS by the USCG, Black Seas MOU, Mediterranean Ocean MOU and/or Indian Ocean MOU on any ship Class and/or certified by IBS.

The results of all regions combined arrive to a rate of 0.52% on the year 2018 and, together with the years 2016 and 2017, an accrued rate of 0.97% for the last three (3) years.

Attached, you will find the data that confirms our previous statements. We encourage you to verify its accuracy and feel free to communicate to whom you may consider appropriate.

1. Performance Worldwide
2. IBS Total Inspection 2018
3. Detentions by Flag State
4. Detentions by Ship Type
5. Detention by Ship Age
6. Detention by Gross Tonnage
7. Detention by Country
8. Inspection / Detention by MOU

3 YEARS CLASSIBS PERFORMANCE USCG

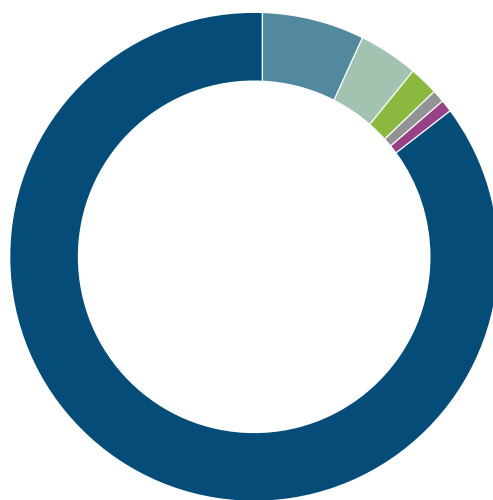


IBS PSC CHARTS

PSC Results per MOU 2016 - 2018

PSC RESULTS PER MOU 2016 - 2018									
	INITIAL INSPECTIONS				ATTRIBUTABLE DETENTIONS				
	2016	2017	2018	TOTAL INSP. PER MOU 2016-2018	2016	2017	2018	TOTAL ATT.PER MOU	% ATT PER MOU 2016-2018
USCG	12	20	23	55	0	0	0	0	0.00
TOKYO MOU	554	499	460	1,513	7	3	1	11	0.73
PARIS MOU	42	39	36	117	1	1	2	4	3.42
BLACK SEA MOU	32	46	53	131	1	0	0	1	0.76
MEDITERRANEAN MOU	11	8	6	25	0	1	0	1	4.00
INDIAN MOU	2	3	3	8	1	0	0	1	12.50
TOTAL PSC RESULTS									
	TOTAL INSPECTIONS PER YEAR				TOTAL ATTRIBUTABLE DETENTIONS PER YEAR				
	2016	2017	2018	TOTAL INSPECTIONS 2016-2018	2016	2017	2018	TOTAL ATT. DETENTIONS 2016-2018	
	653	615	581	1,849	10	5	3	18	
	% ATT. DET PER YEAR			TOTAL ATT. DETENTIONS 2016-2018 (%)					
	1.53	0.81	0.52	0.97					

IBS Total Inspections 2018 - All MOUs



- Tokyo MOU 79%
- Black Sea MOU 9%
- Paris MOU 6%
- USCG 4%
- Mediterranean MOU 1%
- Indian MOU 1%

Inspections / Detentions by Flag State 2016 - 2018

Flag State	Number of Inspections			Number of Detentions			Detentions Ratio (%)		
	2016	2017	2018	2016	2017	2018	2016	2017	2018
PANAMA	528	493	488	9	2	3	1.70	0.41	0.61
JAMAICA	33	34	21	0	1	0	0.00	2.94	0.00
BELIZE	73	72	62	1	1	0	1.37	1.39	0.00
HONDURAS	3	2	1	0	0	0	0.00	0.00	0.00
VANUATU	1	1	7	0	0	0	0.00	0.00	0.00
TANZANIA	3	0	0	0	0	0	0.00	0.00	0.00
MOLDOVA	0	0	0	0	0	0	0.00	0.00	0.00
SIERRA LEONE	1	1	0	0	0	0	0.00	0.00	0.00
KIRIBATI	3	1	1	0	0	0	0.00	0.00	0.00
TURKEY	1	0	0	0	0	0	0.00	0.00	0.00
CHINA	1	0	0	0	0	0	0.00	0.00	0.00
CAMBODIA	1	0	0	0	0	0	0.00	0.00	0.00
TOGO	3	9	1	0	1	0	0.00	11.11	0.00
AZERBAIJAN	1	0	0	0	0	0	0.00	0.00	0.00
UNITED KINGDOM	1	0	0	0	0	0	0.00	0.00	0.00
MONGOLIA	1	2	0	0	0	0	0.00	0.00	0.00
TOTAL	653	615	581	10	5	3	1.53	0.81	0.52

Inspections / Detentions by Ship Type 2016 - 2018

Gross Ton (x1,000)	Number of Inspections			Number of Detentions			Detentions Ratio (%)		
	2016	2017	2018	2016	2017	2018	2016	2017	2018
BULK CARRIER	159	129	111	2	1	1	1.26	0.78	0.90
GENERAL CARGO SHIP	280	280	244	6	2	2	2.14	0.71	0.82
CONTAINER CARGO	0	0	3	0	0	0	0.00	0.00	0.00
RO-RO SHIP	9	3	5	0	0	0	0.00	0.00	0.00
REEFER CARGO SHIP	8	3	5	0	0	0	0.00	0.00	0.00
OIL TANKER	16	13	13	0	0	0	0.00	0.00	0.00
CHEMICAL TANKER	22	18	6	0	0	0	0.00	0.00	0.00
OTHER CARGO SHIP	155	167	194	2	2	0	1.29	1.20	0.00
LPG TANKER	4	2	0	0	0	0	0.00	0.00	0.00
Total	653	615	581	10	5	3	1.53	0.81	0.52

Detentions by Ship's Age 2016 - 2018

Gross Ton (x1,000)	Number of Inspections			Number of Detentions			Detentions Ratio (%)		
	2016	2017	2018	2016	2017	2018	2016	2017	2018
0 - 10 years old	209	56	59	3	1	0	1.44	1.79	0.00
Over 10 and up to 20	159	273	258	0	2	2	0.00	0.73	0.78
Over 20 and up to 30	186	201	181	6	1	0	2.69	0.50	0.00
Over 30	99	85	83	1	1	1	1.01	1.18	1.20
Total	653	615	581	10	5	3	1.53	0.81	0.52

Detentions by Gross Tonnage 2016 - 2018

Gross Ton (x1,000)	Number of Inspections			Number of Detentions			Detentions Ratio (%)		
	2016	2017	2018	2016	2017	2018	2016	2017	2018
Up to 5	322	321	281	6	4	2	1.86	1.25	0.71
Over 5 and up to 10	168	148	157	2	1	1	1.19	0.68	0.64
Over 10 and up to 20	89	85	86	1	0	0	1.12	0.00	0.00
Over 20 and up to 30	31	21	17	1	0	0	3.23	0.00	0.00
Over 30	43	40	40	0	0	0	0.00	0.00	0.00
Total	653	615	581	10	5	3	1.53	0.81	0.52

Inspections / Detentions by Country 2018

Country	Inspections 2018	Detentions 2018	Detention Ratio 2018	% of Inspections 2018
KOREA	34	0	0.00	6%
JAPAN	124	1	0.81	21%
MALAYSIA	21	0	0.00	4%
CHINA	83	0	0.00	14%
VIETNAM	58	0	0.00	10%
PHILIPPINES	46	0	0.00	8%
PERU	1	0	0.00	0%
INDONESIA	19	0	0.00	3%
AUSTRALIA	9	0	0.00	2%
MARSHALL ISLANDS	1	0	0.00	0%
THAILAND	7	0	0.00	1%
SINGAPORE	5	0	0.00	1%
PAPUA NEW GUINEA	10	0	0.00	2%
RUSSIA	69	1	1.45	12%
SPAIN	3	0	0.00	1%
DENMARK	4	0	0.00	1%
GREECE	5	1	20.00	1%
IRAN	3	0	0.00	1%
ITALY	3	0	0.00	1%
USA	23	0	0.00	4%
POLAND	2	0	0.00	0%
EGYPT	1	0	0.00	0%
UKRAINE	9	0	0.00	2%
ROMANIA	16	0	0.00	3%
CHILE	1	0	0.00	0%
BULGARIA	4	0	0.00	1%
TURKEY	4	0	0.00	1%
GEORGIA	5	0	0.00	1%
CROATIA	3	0	0.00	1%

Part 2 Continue →

Inspections / Detentions by Country 2018

Country	Inspections 2018	Detentions 2018	Detention Ratio 2018	% of Inspections 2018
MALTA	2	0	0.00	0%
CANADA	2	0	0.00	0%
FINLAND	1	0	0.00	0%
LITHUANIA	1	0	0.00	0%
TUNEZ	2	0	0.00	0%
TOTAL	581	3	0.52	100%

← Part 1

Inspections / Detentions Japan

Japan	Inspections 2018	Detentions 2018	Detention Ratio 2018	% of Inspections 2018
AKITAFUNAGAWA	4	0	0.00	3%
AOMORI	1	0	0.00	1%
CHIBA	10	0	0.00	8%
FUSHIKI	4	0	0.00	3%
HACHINOHE	3	0	0.00	2%
HAKATA	3	0	0.00	2%
HIMEJI	2	0	0.00	2%
HIROSHIMA	1	0	0.00	1%
HITACHINAKA	1	0	0.00	1%
ISHINOMAKI	1	0	0.00	1%
KAGOSHIMA	2	0	0.00	2%
KAWASAKI	9	1	11.11	7%
KASHIMA	2	0	0.00	2%
KARATSU	1	0	0.00	1%
KOBE	3	0	0.00	2%
KURE	1	0	0.00	1%
KUSHIRO	1	0	0.00	1%
MATSUYAMA	1	0	0.00	1%
MISUMI	2	0	0.00	2%
MOJI	1	0	0.00	1%
MURORAN	1	0	0.00	1%
NIIGATA	7	0	0.00	6%
NAHA	4	0	0.00	3%
NANAO	1	0	0.00	1%
NAGOYA	4	0	0.00	3%
OITA	2	0	0.00	2%
OSAKA	11	0	0.00	9%
ONAHAMA	2	0	0.00	2%

Part 2 Continue →

Inspections / Detentions Japan

Japan	Inspections 2018	Detentions 2018	Detention Ratio 2018	% of Inspections 2018
ONOMICHI	3	0	0.00	2%
OTARU	1	0	0.00	1%
SAKAI	5	0	0.00	4%
SASEBO	2	0	0.00	2%
SENDAISHIOGAMA	3	0	0.00	2%
SHIMONOSEKI	3	0	0.00	2%
SHIMIZU	2	0	0.00	2%
TAKAMATSU	2	0	0.00	2%
TOKUYAMA	3	0	0.00	2%
TOMAKOMAI	5	0	0.00	4%
TOKYO	4	0	0.00	3%
YOKOHAMA	5	0	0.00	4%
WAKAYAMA	1	0	0.00	1%
TOTAL	124	1	0.81	100%

← Part 1

Inspections / Detentions China

China	Inspections 2018	Detentions 2018	Detention Ratio 2018	% of Inspections 2018
BEIHAI	1	0	0.00	1%
CAOFEIDIAN	1	0	0.00	1%
CHANGSHU	1	0	0.00	1%
DALIAN	3	0	0.00	4%
DANDONG	2	0	0.00	2%
FUZHOU	2	0	0.00	2%
HONG KONG	4	0	0.00	5%
HUMEN	1	0	0.00	1%
GUANGZHOU	1	0	0.00	1%
LIANYUNGANG	4	0	0.00	5%
NANTONG	2	0	0.00	2%
NANJING	2	0	0.00	2%
NINGDE	3	0	0.00	4%
NINGBO	1	0	0.00	1%
RIZHAO	3	0	0.00	4%
QINZHOU	3	0	0.00	4%
QINGDAO	5	0	0.00	6%
QUANZHOU	1	0	0.00	1%
TAICANG	4	0	0.00	5%
TAIZHOU	3	0	0.00	4%
TIANJIN	3	0	0.00	4%
SHANGHAI	5	0	0.00	6%
XIAMEN	1	0	0.00	1%
YINGKOU	5	0	0.00	6%
YANGPU	3	0	0.00	4%

Part 2 Continue →

Inspections / Detentions China

China	Inspections 2018	Detentions 2018	Detention Ratio 2018	% of Inspections 2018
YANTAI	5	0	0.00	6%
ZHOUSHAN	5	0	0.00	6%
ZHANGJIAGANG	3	0	0.00	4%
ZHENJIANG	1	0	0.00	1%
WEIFANG	1	0	0.00	1%
WEIHAI	4	0	0.00	5%
TOTAL	83	0	0.00	100%

← Part 1

Inspections / Detentions Vietnam

Vietnam	Inspections 2018	Detentions 2018	Detention Ratio 2018	% of Inspections 2018
CANTHO	1	0	0.00	2%
DONGNAI	4	0	0.00	7%
DANANG	2	0	0.00	3%
DUNG QUAT	2	0	0.00	3%
HAIPHONG	9	0	0.00	16%
HO CHI MINH CITY	9	0	0.00	16%
NGHE AN	3	0	0.00	5%
NHATRANG	2	0	0.00	3%
QUANGNINH	6	0	0.00	10%
QUANG BINH	3	0	0.00	5%
QUYNHON	2	0	0.00	3%
VUNG ANG	1	0	0.00	2%
VUNGTAU	14	0	0.00	24%
TOTAL	58	0	0.00	100%

Inspections / Detentions Russia

Russia	Inspections 2018	Detentions 2018	Detention Ratio 2018	% of Inspections 2018
GELENZHIK	1	0	0.00	1%
NAKHODKA	14	0	0.00	20%
KAVKAZ	2	1	50.00	3%
KORSAKOV	2	0	0.00	3%
NOVOROSSIISK	24	0	0.00	35%
PLASTUN	2	0	0.00	3%
POSIET	2	0	0.00	3%
SEVASTOPOL	1	0	0.00	1%
TUAPSE	1	0	0.00	1%
VLADIVOSTOK	17	0	0.00	25%
VOSTOCHNY	1	0	0.00	1%
VANINO	1	0	0.00	1%
ZARUBINO	1	0	0.00	1%
TOTAL	69	1	1.45	100%

Inspections / Detentions Korea

Korea	Inspections 2018	Detentions 2018	Detention Ratio 2018	% of Inspections 2018
BUSAN	2	0	0.00	6%
CHINHAE	1	0	0.00	3%
DONGHAE	5	0	0.00	15%
GUNSAN	1	0	0.00	3%
GWANGYANG	1	0	0.00	3%
INCHEON	4	0	0.00	12%
MASAN	4	0	0.00	12%
MOKPO	2	0	0.00	6%
POHANG	3	0	0.00	9%
PYEONGTAEK	6	0	0.00	18%
TONGYEONG	1	0	0.00	3%
ULSAN	4	0	0.00	12%
TOTAL	34	0	0.00	100%

Inspections / Detentions Philippines

Philippines	Inspections 2018	Detentions 2018	Detention Ratio 2018	% of Inspections 2018
APARRI	1	0	0.00	2%
BACOLOD	3	0	0.00	7%
BATANGAS	3	0	0.00	7%
BATAAN	3	0	0.00	7%
CAGAYAN DE ORO	2	0	0.00	4%
DAVAO	7	0	0.00	15%
ISABEL	2	0	0.00	4%
MANILA	10	0	0.00	22%
LEGASPI	2	0	0.00	4%
SUBIC BAY	8	0	0.00	17%
SAN FERNANDO	3	0	0.00	7%
SAN JOSE DE BUENAVISTA	1	0	0.00	2%
ZAMBOANGA	1	0	0.00	2%
TOTAL	46	0	0.00	100%

Inspections / Detentions Indonesia

Indonesia	Inspections 2018	Detentions 2018	Detention Ratio 2018	% of Inspections 2018
DUMAI	4	0	0.00	21%
KOTA BARU	1	0	0.00	5%
TANJUNG PERAK	1	0	0.00	5%
TANJUNG PRIOK	6	0	0.00	32%
TELUK BAYUR	1	0	0.00	5%
SUNGAI PAKNING	2	0	0.00	11%
GRESIK	4	0	0.00	21%
TOTAL	19	0	0.00	100%

Inspections / Detentions USA

USA	Inspections 2018	Detentions 2018	Detention Ratio 2018	% of Inspections 2018
PUERTO RICO	2	0	0.00	9%
USA	4	0	0.00	17%
FLORIDA	5	0	0.00	22%
OREGON	2	0	0.00	9%
TEXAS	2	0	0.00	9%
LOUISIANA	8	0	0.00	35%
TOTAL	23	0	0.00	100%

Inspections / Detentions Ukraine

Ukraine	Inspections 2018	Detentions 2018	Detention Ratio 2018	% of Inspections 2018
KHERSON	2	0	0.00	22%
ODESSA	2	0	0.00	22%
MARIUPOL	1	0	0.00	11%
NIKOLAYEV	3	0	0.00	33%
YUZHNYI	1	0	0.00	11%
TOTAL	9	0	0.00	100%

Inspections / Detentions Romania

Romania	Inspections 2018	Detentions 2018	Detention Ratio 2018	% of Inspections 2018
BRAILA	4	0	0.00	25%
CONSTANTA	12	0	0.00	75%
TOTAL	16	0	0.00	100%

Inspections / Detentions Thailand

Thailand	Inspections 2018	Detentions 2018	Detention Ratio 2018	% of Inspections 2018
SONGKHLA	1	0	0.00	14%
BANGKOK	6	0	0.00	86%
TOTAL	7	0	0.00	100%

Inspections / Detentions Denmark

Denmark	Inspections 2018	Detentions 2018	Detention Ratio 2018	% of Inspections 2018
THYBORON	1	0	0.00	25%
KERTEMINDE	2	0	0.00	50%
NYBORG	1	0	0.00	25%
TOTAL	4	0	0.00	100%

Inspections / Detentions Greece

Greece	Inspections 2018	Detentions 2018	Detention Ratio 2018	% of Inspections 2018
AMFILOCHIA	1	0	0.00	20%
KALILIMENES	1	0	0.00	20%
PIRAEUS	1	0	0.00	20%
STRATON	1	0	0.00	20%
VOLOS	1	1	100.00	20%
TOTAL	5	1	20.00	100%

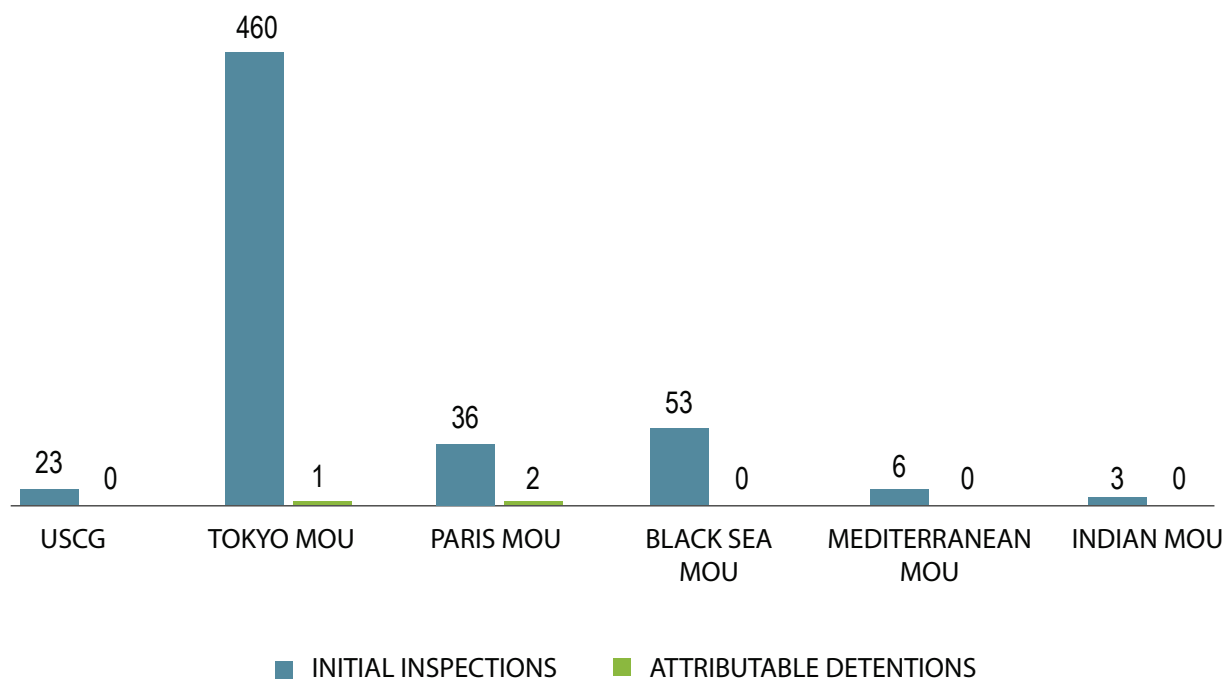
Inspections / Detentions Australia

Australia	Inspections 2018	Detentions 2018	Detention Ratio 2018	% of Inspections 2018
ALBANY	1	0	0.00	11%
BRISBANE	1	0	0.00	11%
BELL BAY	2	0	0.00	22%
HAY POINT	1	0	0.00	11%
NEWCASTLE	3	0	0.00	33%
PORTLAND	1	0	0.00	11%
TOTAL	9	0	0.00	100%

Inspections / Detentions Malaysia

Malaysia	Inspections 2018	Detentions 2018	Detention Ratio 2018	% of Inspections 2018
TANJUNG PELEPAS	1	0	0.00	5%
KOTA	2	0	0.00	10%
PENANG	2	0	0.00	10%
BINTULU	4	0	0.00	19%
LAHAD DATU	1	0	0.00	5%
PASIR GUDANG	1	0	0.00	5%
PORT KELANG	7	0	0.00	33%
MUAR	1	0	0.00	5%
KUCHING	2	0	0.00	10%
TOTAL	21	0	0.00	100%

IBS Inspections -vs- Attributable Detentions 2018



PHOTOGRAPHS OF DEFICIENCIES IDENTIFIED DURING PORT STATE CONTROL



Leaked fire line



Wasted support bracket



Poor condition of lifeboat hull



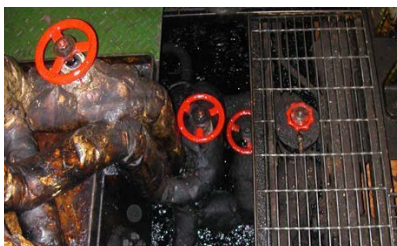
Leaked fire line



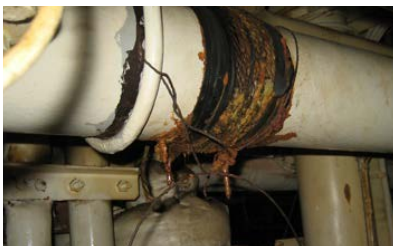
Disconnected CO2 bottle



Oil leakage and accumulation



Oily and dirty E/R floor



Patched sea water pipe



Corroded packing



Missing butterfly nut



Wasted fire damper flap



Worn link and missing of stud

MOUs OFFICIAL ANNUAL REPORTS

Paris MOU-Performance 2016 - 2018

Recognized Organization (RO)	RO Abrev	Inspections	Detentions	Low / Medium limit	Medium / high limit	Excess Factor	Performance level
American Bureau of Shipping	ABS	6,009	2	139	102	-1.95	HIGH
DNV GL AS	DNVGL	18,192	18	395	332	-1.88	
China Classification Society	CCS	869	0	25	10	-1.87	
Lloyd's Register	LR	12,505	14	276	224	-1.86	
Bureau Veritas	BV	11,450	25	254	204	-1.74	
Nippon Kaiji Kyokai	NKK	8,393	23	189	146	-1.66	
Koran Register of Shipping	KRS	1,233	2	33	16	-1.62	
Turkish Lloyd	TL	487	0	15	4	-1.60	
RINA Services S.p.A	RINA	4,427	13	104	73	-1.60	
Russian Maritime Register of Shipping	RMRS	2,926	15	71	46	-1.24	
Polski Rejestr Statkow (Polish Register of Shipping)	PRS	531	3	16	5	-0.48	
Panama Maritime Documentation Services	PMDS	149	0	6	0	0.05	
Phoenix Register of Shipping	PHRS	496	5	16	4	0.06	
Croatian Register of Shipping	CRS	153	1	6	0	0.19	
International Naval Surveys Bureau	INSB	617	9	19	6	0.23	
Indian Register of Shipping	IRS	155	3	6	0	0.49	
Overseas Marine Certification Services	OMCS	99	2	5	0	0.50	
Dromon Bureau of Shipping	DBS	542	11	17	5	0.51	
Macosnar Corporation	MC	131	3	6	0	0.56	
Intermaritime Certification Services, ICS Class	ICS	174	4	7	0	0.57	
Isthmus Bureau of Shipping	IBS	117	4	5	0	0.78	
Bulgarian Register of Shipping	BRS	237	7	9	1	0.78	
National Shipping Adjuster Inc.	NASHA	217	7	8	0	0.84	
Maritime Bureau of Shipping	MBS	84	4	4	0	0.94	
Maritime Lloyd - Georgia	ML	149	6	6	0	0.96	
Other	OTHER	399	13	13	3	0.99	
Venezuelan Register of Shipping	VRS	130	6	6	0	1.15	LOW
Mediterranean Shipping Register	MRS	150	8	6	0	1.79	
International Register of Shipping	IS	254	14	9	1	2.44	VERY LOW
Panama Shipping Registrar Inc.	PSR	97	7	5	0	2.60	
Shipping Register of Ukraine	SRU	515	30	16	5	3.27	
Columbus American Register	COLAMREG	67	7	4	0	4.23	

PARIS MOU 2018

Recognized Organization	Abbr	Total number of inspections	Number of individual ships inspected*	Total number of inspections*	Detention % of total number of inspections	+/- Percentage of Average 2018. (0.39)	Detention % of individual ships	+/- Percentage of Average Indiv. 2018 (0.45)
Aegean Register of Shipping	CLASSARS	10	8	-	-	-0.39	-	-0.45
American Bureau of Shipping	ABS	2,046	1,925	1	0.05	-0.34	0.05	-0.40
ASIA Classification Society	ASIA	21	14	1	4.76	4.37	7.14	6.69
Bulgarian Register of Shipping	BRS	70	44	2	2.86	2.47	4.55	4.09
Bureau Veritas	BV	3,876	3,300	11	0.28	-0.11	0.33	-0.12
China Classification Society	CCS	303	289	-	-	-0.39	-	-0.45
Columbus American Register	COLAMREG	23	15	3	13.04	12.65	20.00	19.55
Cosmos Marine Bureau Inc.	CMB	13	8	1	7.69	7.30	12.50	12.05
Croatian Register of Shipping	CRS	51	44	-	-	-0.39	-	-0.45
DNV GL AS	DNVGL	6,450	5,621	4	0.06	-0.33	0.07	-0.38
Dromon Bureau of Shipping	DBS	205	125	3	1.46	1.07	2.40	1.95
Indian Register of Shipping	IRS	77	57	3	3.90	3.51	5.26	4.81
Intermaritime Certification Services, ICS Class	ICS	66	51	1	1.52	1.13	1.96	1.51
International Naval Surveys Bureau	INSB	215	151	5	2.33	1.94	3.31	2.86
International Register of Shipping	IS	64	47	4	6.25	5.86	8.51	8.06
International Ship Classification	ISC	18	9	1	5.56	5.17	11.11	10.66
Iranian Classification Society	IRCS	21	16	2	9.52	9.13	12.50	12.05
Isthmus Bureau of Shipping, S.A.	IBS	36	30	2	5.56	5.17	6.67	6.21
Korean Register of Shipping	KRS	447	426	1	0.22	-0.17	0.23	-0.22
Lloyd's Register	LR	4,137	3,689	6	0.15	-0.24	0.16	-0.29
Macosnar Corporation	MC	52	38	2	3.85	3.46	5.26	4.81
Maritime Bureau of Shipping	MBS	18	12	1	5.56	5.17	8.33	7.88
Maritime Lloyd	ML	48	30	2	4.17	3.78	6.67	6.21
Mediterranean Shipping Register	MSR	61	28	4	6.56	6.17	14.29	13.83
National Shipping Adjuster Inc.	NASHA	88	60	1	1.14	0.75	1.67	1.21
Nippon Kaiji Kyokai	NKK	2,785	2,529	8	0.29	-0.10	0.32	-0.14
Novel Classification Society S.A.	NCS	16	11	-	-	-0.33	-	-0.45
Other	OTHER	176	135	7	3.98	3.59	5.19	4.73
Overseas Marine Certification Services	OMCS	39	30	1	2.56	2.17	3.33	2.88
Panama Maritime Documentation Services	PMDS	41	41	-	-	-0.39	-	-0.45
Panama Register Corporation	PRC	10	7	-	-	-0.39	-	-0.45
Panama Shipping Registrar Inc.	PSR	34	23	1	2.94	2.55	4.35	3.90
Phoenix Register of Shipping	PHRS	208	139	3	1.44	1.05	2.16	1.71
Polski Rejster Statkow (Polish Register of Shipping)	PRS	199	139	-	-	-0.39	-	-0.45

BLACK SEA MOU PERFORMANCE 2016 - 2018

Recognized organization	NUMBER OF INSPECTIONS	NUMBER OF RO RELATED DETAINABLE DEFICIENCIES	NUMBER OF RO RELATED DETENTIONS	NUMBER OF DEFICIENCIES	NUMBER OF DETENTIONS	NUMBER OF DETAINABLE DEFICIENCIES	NUMBER OF INSPECTIONS WITH DEFICIENCIES
American Bureau of Shipping	1,622	1	1	3,263	21	38	667
American Register of Shipping	48	0	0	104	1	8	20
ASIA Classification Society	11	0	0	77	1	2	7
Bulgarian Register of Shipping	232	5	3	1,484	25	112	193
Bureau Veritas	2,565	5	3	7,836	77	169	1,304
C.T.M Inspection and Classification Company, S. de R.L.	2	0	0	7	0	0	1
Caspian Register of Shipping	2	0	0	8	0	0	1
China Classification Society	271	0	0	425	1	1	76
Columbus American Register	43	7	2	447	9	60	40
Cosmos Marine Bureau Inc.	30	2	1	279	8	40	26
CR Classification Society (CCRS)	6	0	0	65	1	2	6
Croatian Register of Shipping	28	0	0	62	1	1	11
Cyprus Bureau of Shipping	2	0	0	2	0	0	1
Det Norske Veritas	831	0	0	1,313	3	4	287
DNV GL AS	2,818	0	0	6,882	44	92	1,281
Dromon Bureau of Shipping	552	9	2	3,740	65	239	467
Ferriby marine	11	0	0	37	0	0	5
Germanisher Lloyd	589	0	0	1,444	10	19	281
Global Marine Bureau Inc.	16	0	0	90	1	6	12
Global Shipping Bureau Inc.	2	0	0	23	0	0	2
Guardian Bureau of Shipping	17	13	2	166	2	24	15
Hellenic Register of Shipping	13	0	0	60	1	1	8
Honduras International Surveying and Inspection Bureau	1	0	0	3	0	0	1
Indian Register of Shipping	47	0	0	167	2	5	32
Inspeccion y Clasificacion Maritima (INCLAMAR)	2	0	0	27	0	0	2
Intermaritime Certification Services, ISC Class	117	0	0	658	7	16	87
International Maritime Register	8	0	0	46	0	0	7
International Naval Surveys Bureau	492	7	5	3,370	54	191	405
International Register of Shipping	181	10	3	1,352	23	110	150
International Ship Classification	22	0	0	96	2	4	12
Iranian Classification Society	9	0	0	12	0	0	2
Isthmus Bureau of Shipping, S.A.	131	7	1	1,134	21	56	113
Korea Classification Society	8	0	0	7	0	0	2
Korean Register os Shipping	248	0	0	702	7	14	114
Libyan Surveyor Mr. Sif Ennasar Abduhamid Gihami	2	0	0	10	0	0	2

BLACK SEA MOU 2018

Recognized organization (RO)	NUMBER OF INSPECTIONS	NUMBER OF INSPECTIONS WITH DEFICIENCIES	NUMBER OF DEFICIENCIES	NUMBER OF RO RELATED DEFICIENCIES	NUMBER OF DETENTIONS	DETENTIONS WITH RO RELATED DETAINABLE DEFICIENCIES
American Bureau of Shipping	554	232	1,192	0	8	0
American Register of Shipping	19	8	45	0	0	0
Bulgarian Register of Shipping	82	72	539	3	9	1
Bureau Veritas	922	465	2,948	3	33	1
China Classification Society	83	25	172	0	1	0
Columbus American Register	16	14	208	7	5	2
Det Norske Veritas	113	44	189	0	0	0
DNV GL AS	1,075	505	3,004	0	25	0
Dromon Bureau of Shipping	191	164	1,343	0	24	0
Germanischer Lloyd	85	39	241	0	3	0
Indian Register of Shipping	28	20	116	0	1	0
Intermaritime Certification Services, ICS Class	40	32	229	0	3	0
International Naval Surveys Bureau	184	154	1,212	4	20	2
International Register of Shipping	38	33	270	1	4	1
Isthmus Bureau of Shipping, S.A	53	48	515	0	12	0
Korean Register of Shipping	85	39	254	0	4	0
Lloyd's Register	832	407	2,335	0	12	0
Macosnar Corporation	59	50	401	1	5	1
Maritime Bureau of Shipping	19	17	137	3	3	1
Maritime Lloyd (ML)	95	85	942	1	20	1
Mediterranean Shipping Register (MRS)	33	28	172	0	2	0
National Shipping Adjuster Inc.	73	60	473	1	10	1
Nippon Kaiji Kyokai	1,095	558	3,578	0	37	0
Other	212	180	1,826	19	38	5
Overseas Marine Certification Services.	19	17	170	0	2	0
Panama Maritime Documentation Services	12	9	90	0	3	0
Panama Shipping Registrar Inc.	15	9	83	0	1	0
Phoenix Register of Shipping	164	135	1,165	2	22	2
Polski Rejestr Statkow (Polish Register of Shipping)	64	37	313	0	3	0
RINA Services S.p.A	324	165	1,064	1	14	1
Russian Maritime Register of Shipping.	505	332	1,706	0	13	0
Shipping Register of Ukraine (SRU)	106	91	712	0	12	0
Turkish Lloyd	164	126	699	0	2	0
Venezuelan Register of Shipping	35	32	305	0	7	0

Note: Number of inspections and detentions are calculated corresponding to each recognized organization (RO) that issued certificate(s) for a ship. In case that ship's certificates were issued more than one ROs, the inspection and detention would be counted to each of them.

TOKYO MOU PERFORMANCE 2016 - 2018

Recognized Organization (RO)	No of overall inspections 2016-2018	No. RO responsible detentions 2016-2018	Low/medium Limit	Medium/high Limit	Excess factor	Performance level
SingClass International Pte Ltd	187	7	7	0	0.95	MEDIUM
Cosmos Marine Bureau	336	10	11	2	0.85	
International Ship Classification	615	12	19	6	0.48	
Panama Shipping Registrar Inc.	185	3	7	0	0.40	
Croatian Register of Shipping	141	2	6	0	0.37	
Ship Classification Malaysia	86	1	4	0	0.36	
Sign-Lloyd	324	5	11	2	0.34	
New United International Marine Services Ltd	198	2	8	0	0.24	
Polski Rejestr Statkow	135	1	6	0	0.23	
Biro Klasifikasi Indonesia	326	4	11	2	0.23	
Union Bureau of Shipping	1,522	25	40	21	0.21	
Korea Classification Society (former Josen Classification Society)	666	9	20	7	0.16	
International Register os Shipping	412	4	13	3	0.09	
Dromon Bureau of Shipping	232	1	9	1	0.05	
Panama Register Corporation	158	0	7	0	0.03	
Universal Maritime Bureau	834	7	24	10	-0.39	HIGH
Overseas Marine Certification Services	1,296	11	35	17	-0.58	
Indian Register of Shipping	261	0	9	1	-0.65	
Isthmus Bureau of Shipping	1,513	11	40	21	-0.78	
Panama Maritime Documentation Services	1,358	9	36	18	-0.82	
CR Classification Society	722	2	21	8	-1.11	
Intermaritime Certification Services, S.A.	2,208	9	55	33	-1.34	
Vietnam Register	2,343	5	59	35	-1.65	
Bureau Veritas	11,439	19	254	204	-1.80	
Vietnam Register	2,499	2	62	38	-1.85	
Nippon Kaiji Kyokai	32,754	31	697	613	-1.89	
Lloyd's Register	14,569	12	320	263	-1.90	
RINA Services S.p.A	3,125	1	76	49	-1.93	
Russian Maritime Register of Shipping	1,382	0	37	19	-1.94	

TOKYO MOU 2018

Recognized Organization (RO)	No. of overall inspections	No. of overall detentions	No. of RO responsible detentions	Detention percentage%	RO responsible detention percentage%	Percentage of RO responsible detentions%
American Bureau of Shipping	3,914	73	1	1.87	0.03	1.37
American Register of Shipping	42	0	0	0	0	0
Asia Classification Society	11	0	0	0	0	0
Biro Klasifikasi Indonesia	121	9	4	7.44	3.31	44.44
Bulgarski Koraben Registar	1	0	0	0	0	0
Bureau Veritas	4,045	136	6	3.36	0.15	4.41
C.T.M Inspection and Classification Company, S. de R.L.	1	1	0	100.00	0	0
China Classification Society	2,561	20	0	0.78	0	0
Cosmos Marine Bureau	114	18	3	15.79	2.63	16.67
CR Classification Society	211	2	0	0.95	0	0
Croatian Register of Shipping	51	3	1	5.88	1.96	33.33
Cyprus Bureau of Shipping	1	0	0	0	0	0
DNV GL AS	8,353	177	3	2.12	0.04	1.69
Dromon Bureau of Shipping	80	11	0	13.75	0	0
Ferriby Marine	1	0	0	0	0	0
Foresight Ship Classification	11	0	0	0	0	0
Global Marine Bureau	5	0	0	0	0	0
Global Shippign Bureau	1	0	0	0	0	0
Hellenic Register of Shipping	3	0	0	0	0	0
Horizon International of Naval Surveying and Inspection Bureau, S.A.	1	0	0	0	0	0
Indian Register of Shipping	84	4	0	4.76	0	0
Intermaritime Certification Services, S.A.	802	44	3	5.49	0.37	6.82
International Maritime Register	9	0	0	0	0	0
International Naval Surveys Bureau	43	3	0	6.98	0	0
International Register of Shipping	135	17	1	12.59	0.74	5.88
International Ship Classification	149	18	4	12.08	2.68	22.22
Iranian Classification Society	31	4	0	12.90	0	0
Isthmus Bureau of Shipping	460	34	1	7.39	0.22	2.94
Isthmus Maritime Classification Society S.A.	9	0	0	0	0	0
Korea Classification Society (former Joson Classification Society)	127	9	3	7.09	2.36	33.33
Korea Ship Safety Technology Authority	26	0	0	0	0	0
Korean Register of Shipping	3,156	55	0	1.74	0	0
Libyan Surveyor Mr. Sif Ennasar Abdulhamid Giahmi	1	0	0	0	0	0
Lloyd's Register	4,939	137	4	2.77	0.08	2.92

USCG PERFORMANCE 2016 - 2018

Recognized Organization (RO)	Abbreviation	Vessel Examinations				RO-Related Detentions				Ratio
		2016	2017	2018	Total	2016	2017	2018	Total	
American Bureau of Shipping	ABS	1,836	1,685	1,936	5,457	-	-	-	-	0.00%
Bureau Veritas	BV	1,113	1,166	1,191	3,470	-	-	2	2	0.05%
China Classification Society	CCS	231	194	240	665	-	-	-	-	0.00%
CR Classification Society	CR	1	13	22	36	-	-	-	-	0.00%
Croatian Register of Shipping	CRS	17	14	20	51	-	-	-	-	0.00%
DNV-GL	DNV GL	2,122	3,271	3,658	9,051	-	-	3	3	0.03%
Dromon Bureau of Shipping	DBS	-	2	2	4	-	-	-	-	0.00%
Hellenic Register of Shipping	HRS	-	1	6	7	-	-	-	-	0.00%
Horizon International Naval Survey and Inspection Bureau	HNS	2	4	6	12	-	-	-	-	0.00%
Indian Register of Shipping	IRS	13	13	22	48	-	-	-	-	0.00%
International Naval Surveys Bureau	INSB	6	3	8	17	-	-	-	-	0.00%
Isthmus Bureau of Shipping	IBS	12	20	23	55	-	-	-	-	0.00%
Korean Register of Shipping	KRS	242	314	269	825	-	-	-	-	0.00%
Lloyd's Register	LR	2,403	2,405	2,684	7,056	-	1	-	1	0.01%
Nippon Kaiji Kyokai	NKK	2,296	2,282	2,478	6,941	-	-	2	2	0.02%
Panama Bureau of Shipping	PBS	4	2	1	7	-	-	-	-	0.00%
Panama Maritime Surveyors Bureau	PMS	3	11	9	23	-	-	-	-	0.00%
Polski Rejestr Statkow	PRS	17	22	32	71	-	-	-	-	0.00%
Registro Italiano Navale	RINA	284	320	431	1,035	-	-	-	-	0.00%
Rinava Portuguesa	RP	14	17	19	50	-	-	-	-	0.00%
Intermaritime Certification Services	IMC	12	16	8	36	-	-	-	-	0.00%
Universal Shipping Bureau	YSB	1	8	3	12	-	-	-	-	0.00%
VG Register of Shipping	VGRS	1	1	1	3	-	-	-	-	0.00%
International Register of Shipping	IROS	4	8	15	27	-	-	-	-	0.00%
Russian Maritime Register of Shipping	RS	34	29	32	95	-	-	1	1	1.05%
National Shipping Adjuster Inc	NASHA	11	21	24	56	1	-	-	1	1.78%
Bulgarian Register of Shipping	BKR	6	17	275	0	-	1	1	1	2.00%
Conaria Group	CNRIN	12	65	50	127	-	-	-	4	3.14%
Panama Maritime Documentation Service	PMDS	31	42	37	110	3	1	1	4	3.63%
Macosnar Coporation	MC	1	1	8	10	1	-	-	1	10.00%
Panama Register Corporation	PRC	3	-	-	3	1	-	-	1	33.33%

A detention ratio less than 0.5%	0 points
A detention ratio equal to 0.5% or less than 1%	3 points
A detention ratio equal to 1% or less than 2%	5 points
A detention ratio equal to or greater than 2%	Priority 1

INDIAN OCEAN MOU 2016 - 2018

Recognized Organization (RO)	Number of Inspections				Number of Inspections with Deficiencies				3-year average percentage
	Year				Year				
	2016	2017	2018	Total	2016	2017	2018	Total	
American Bureau of Shipping	628	565	589	1782	310	269	262	841	47.19
American Register of Shipping	2	1	1	4	2	0	0	2	50.00
Asia Classification Society	0	0	3	3	0	0	3	3	100.00
Bulgarski Koraben Register	0	1	0	1	0	1	0	1	100.00
Bureau Veritas	693	646	621	1960	424	372	327	1123	57.30
China Classification Society	317	285	294	896	168	144	116	428	47.77
CR Classification Society	6	2	0	8	5	1	0	6	75.00
Columbus American Register	1	4	6	11	1	4	5	10	90.91
Croatian Register of Shipping	4	6	5	15	3	3	4	10	66.67
Conarina Llc	1	0	0	1	1	0	0	1	100.00
Cosmos Marine Bureau Inc.	0	1	3	4	0	0	2	2	50.00
DNV GL AS	949	931	991	2871	486	425	422	1333	46.43
Dromon Bureau of Shipping	3	8	18	29	2	6	17	25	86.21
Global Marine Bureau Inc.	0	0	3	3	0	0	2	2	66.67
Guardian Bureau of Shipping	0	1	4	5	0	1	4	5	100.00
Indian Register of Shipping	31	30	43	104	22	22	30	74	71.15
Indonesia Classification Bureau	1	0	3	4	0	0	3	3	75.00
Inspeccion y Clasificacion Maritima	1	0	0	1	1	0	0	1	100.00
Intermaritime Certification Services S.A.	0	0	2	2	0	0	2	2	100.00
International Register of Shipping	1	0	0	1	1	0	0	1	100.00
International Maritime Register	9	6	8	23	8	6	8	22	95.65
International Naval Survey Bureau	26	12	20	58	26	11	19	56	96.55
International Ship Classification	1	0	2	3	1	0	2	3	100.00
Iranian Classification Society	4	1	4	9	1	1	3	5	55.56
Isthmus Bureau of Shipping, S.A.	2	3	3	8	1	3	3	7	87.50
Isthmus Maritime Classification Society S.A.	0	0	1	1	0	0	1	1	100.00
Korea Classification Society	0	1	2	3	0	1	1	2	66.67
Korea Ship Safety Technology Authority	0	1	1	2	0	1	1	2	100.00
Korean Register of Shipping	351	285	282	918	208	152	149	509	55.45
Lloyd's Register	770	706	755	2231	392	341	364	1097	49.17
Macosnar Corporation Society	4	2	3	9	4	2	3	9	100.00
Maritime Bureau of Shipping	0	1	3	4	0	1	3	4	100.00

INDIAN OCEAN MOU 2018

Recognized organization	NUMBER OF OVERALL INSPECTIONS	NUMBER OF INSPECTIONS WITH DEFICIENCIES	NUMBER OF OVERALL DETENTIONS	OVERALL DETENTIONS %	NUMBER OF RO RESPONSIBLE DETENTIONS	RO RESPONSIBLE DETENTIONS %	NUMBER OF RO RELATED DETENTIONS
American Bureau of Shipping	589	262	22	3.74	0	0.00	0
American Register of Shipping	1	0	0	0.00	0	0.00	0
Asia Classification Society	3	3	0	0.00	0	0.00	0
Bureau Veritas	622	328	34	5.47	1	0.16	1
China Classification Society	294	116	5	1.70	0	0.00	0
Columbus American Register	6	5	1	16.67	0	0.00	0
Cosmos Marine Bureau Inc.	3	2	0	0.00	0	0.00	0
Croatian Register of Shipping	5	4	0	0.00	0	0.00	0
DNV GL AS	991	422	37	3.73	2	0.20	2
Dromon Bureau of Shipping	18	17	1	5.56	0	0.00	0
Guardian Bureau of Shipping	4	4	1	25.00	0	0.00	0
Global Marine Bureau Inc.	3	2	0	0.00	0	0.00	0
Indonesian Classification Bureau	3	3	1	33.33	0	0.00	0
Indian Register of Shipping	43	30	4	9.30	1	2.33	1
Intermaritime Certification Services, S.A.	2	2	0	0.00	0	0.00	0
International Naval Surveys Bureau	8	8	1	12.50	0	0.00	0
International Register of Shipping	20	19	9	45.00	0	0.00	0
International Ship Classification	2	2	1	50.00	0	0.00	0
Iranian Classification Society	4	3	2	50.00	0	0.00	0
Isthmus Bureau of Shipping, S.A	3	3	0	0.00	0	0.00	0
Korea Classification Society	1	1	0	0.00	0	0.00	0
Korea Register of Shipping	2	1	0	0.00	0	0.00	0
Korean Register of Shipping	282	149	12	4.26	1	0.35	1
Korean Ship Safety Technology Authority	1	1	0	0.00	0	0.00	0
Lloyd's Register	755	364	24	3.18	1	0.13	1
Macosnar Corporation	3	3	2	66.67	0	0.00	0
Maritime Bureau of Shipping	3	3	0	0.00	0	0.00	0
National Shipping Adjuster Inc.	1	-	1	100.00	0	0.00	0
Nippon Kaiji Kyokai	4	3	0	0.00	0	0.00	0
No Class	1684	863	64	3.80	3	0.18	7
Novel Classification Society S.A.	8	8	0	0.00	0	0.00	0
Other *	29	28	7	24.14	0	0.00	0
Overseas Marine Certification Services	2	2	0	0.00	0	0.00	0
Panama Maritime Documentation Services	1	-	0	0.00	0	0.00	0
Panama Shipping Registrar Inc.	1	-	0	0.00	0	0.00	0
Phoenix Register of Shipping	2	2	0	0.00	0	0.00	0
Polski Rejestr Statkow (Polish Register of Shipping)	12	7	1	8.33	0	0.00	0
Russian Maritime Register of Shipping	58	49	5	8.62	0	0.00	0
Russian River Register	1	-	0	0.00	0	0.00	0
RINA Services S.p.A.	186	99	12	6.45	2	1.08	2
Sign-Lloyd	1	-	0	0.00	0	0.00	0
SignClass International Pte. Ltd.	1	-	0	0.00	0	0.00	0
Viet Nam Register	33	30	5	15.15	1	3.03	5
Venezuelan Register of Shipping	1	-	1	100.00	0	0.00	0
Withdrawn	2	2	0	0.00	0	0.00	0



PORT STATE CONTROL **2018**
www.ClassIBS.org